

PRODUCT ID: 72379

Post

MODEL

P60B-HR2x3

DIMENSIONS

60" H x 6" W x 6" D (est. 6.639 lbs)

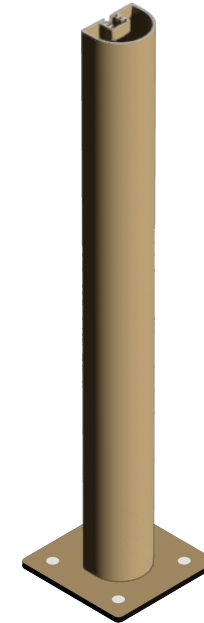
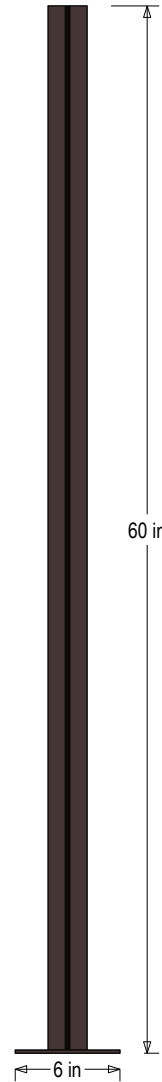
CONSTRUCTION

Finish: Duranodic Bronze

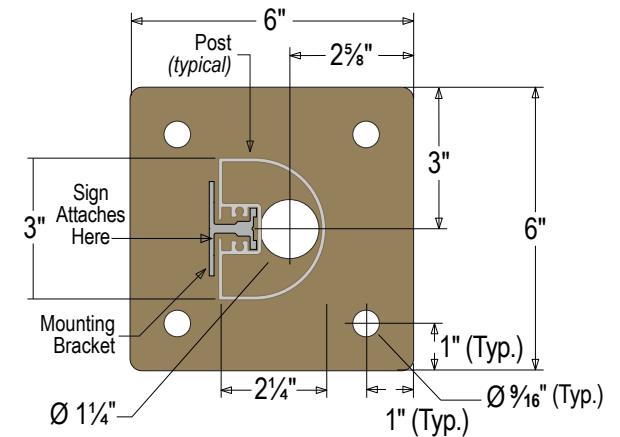
Material: 2-1/4"x 3" D-shaped extruded 6063-T6 aluminum post with one sign mounting channel, end cap and 6" sq. welded aluminum base plate. Base plate is 3/16" thick with pre-drilled anchoring holes.

Product View

NOTE: Sign image may not exactly represent the finished product. For illustration purposes only.



Baseplate Detail



Directional Systems

2201 W 50th St.

Erie, PA 16509

Phone: (877) 827-8296

Fax: (877) 827-8291

Email: sales@directionalsystems.com

Website: www.directionalsystems.com

Directional
Systems