

## PRODUCT ID: 6765

### Outdoor Blank-out LED Direct-view Sign

#### MODEL

TCL1434GGR-A255/120-277VAC



#### DIMENSIONS

14" H x 34" W x 2.5" D (est. 11.357 lbs)

#### CLASS

CLASS: TCL Series

Control Method: Switch (not included) or external relay.

#### CONSTRUCTION

Cabinet: 1-piece, corrosion resistant, extruded aluminum frame, 2.5" deep.

Face Material: 1/8" impact resistant, smoke-tinted polycarbonate (5109)

Faces: Single Faced Sign

Finish: Duranodic Bronze

Mounting Channel: None

#### ELECTRICAL

Flashing: Not Included

Input Voltage: 120-277 VAC

UL/cUL Listed: Listed for wet locations

#### MESSAGE

Illumination: Super bright direct view LEDs. Message blanks out when off.

Sign Messages: See message table below

## Product View

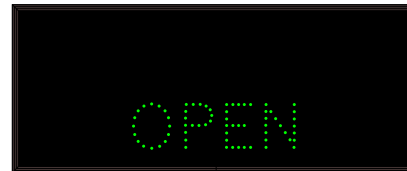
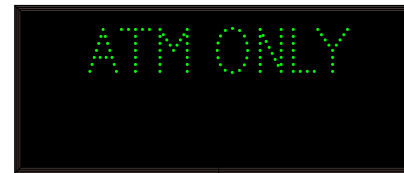
NOTE: Sign image may not exactly represent the finished product. For illustration purposes only.



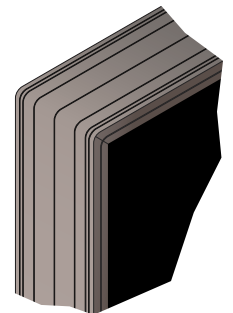
| MESSAGE  | LED/COLOR            | HEIGHT | AMPS        |
|----------|----------------------|--------|-------------|
| ATM ONLY | Green Wide Angle LED | 3.5"   | 0.084-0.036 |
| OPEN     | Green Wide Angle LED | 3.5"   | 0.055-0.024 |
| CLOSED   | Red Wide Angle LED   | 3.5"   | 0.041-0.018 |

NOTE: Above messages are independently controlled.

#### Sample Display Options



#### Frame Detail



#### Directional Systems

2201 W 50th St.

Erie, PA 16506

Phone: (877) 827-8296

Fax: (877) 827-8291

Email: sales@directionalsystems.com

Website: www.directionalsystems.com

