

PRODUCT ID: 57086

Outdoor Blank-out LED Direct-view Sign

MODEL

TCL77DGG-224H/120-277VAC



DIMENSIONS

7" H x 7" W x 5.5" D (est. 6.699 lbs)

CLASS

CLASS: TCL Series

Control Method: Switch (not included) or external relay.

CONSTRUCTION

Cabinet: Corrosion resistant, extruded aluminum frame. 5.5" deep, mitered construction.

Face Material: Injection molded, impact resistant Lexan hood with Lexan lenses

Faces: Double Faced Sign

Finish: Duranodic Bronze

Mounting Channel: None

ELECTRICAL

Flashing: Factory setting 55fpm.

Input Voltage: 120-277 VAC

UL/cUL Listed: Listed for wet locations

MESSAGE

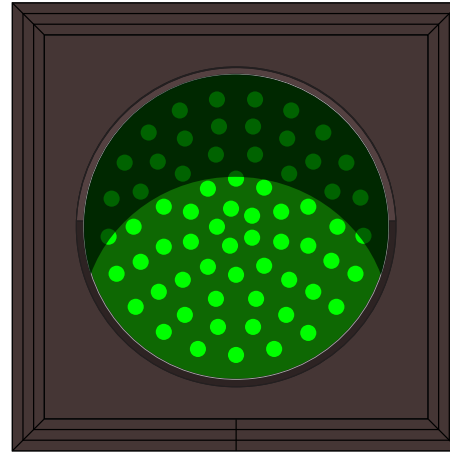
Illumination: Super bright direct view LEDs. Message blanks out when off.

Sign Messages: See message table below

Product View

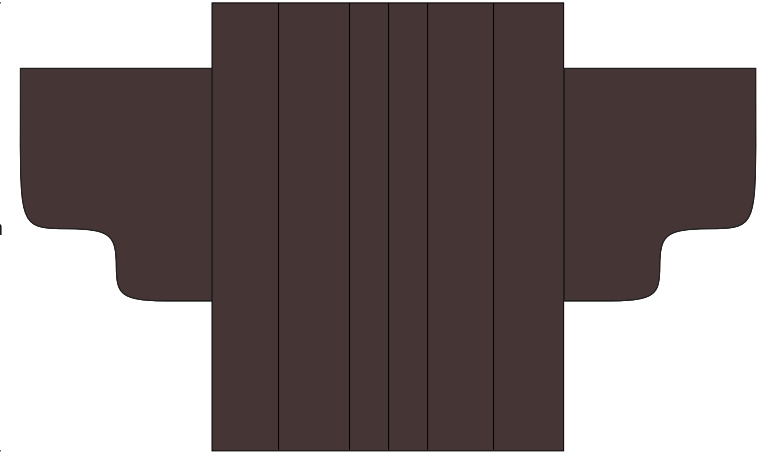
NOTE: Sign image may not exactly represent the finished product. For illustration purposes only.

Side A



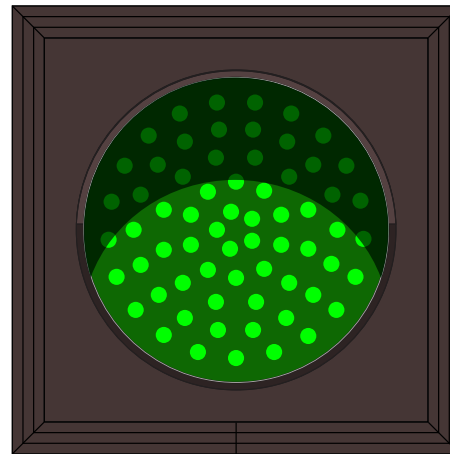
7 in

7 in

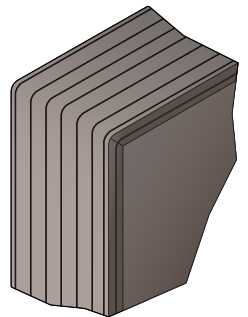


5 1/2 in

Side B



Frame Detail



MESSAGE

LED/COLOR

HEIGHT

AMPS

Green Indicator Dot	Green Wide Angle LED	4.0"	0.053-0.023
Green Indicator Dot (Flashing)	Green Wide Angle LED	4.0"	0.053-0.023
Green Indicator Dot	Green Wide Angle LED	4.0"	0.053-0.023
Green Indicator Dot (Flashing)	Green Wide Angle LED	4.0"	0.053-0.023

NOTE: Above messages are independently controlled.

Directional Systems

2201 W 50th St.

Erie, PA 16506

Phone: (877) 827-8296

Fax: (877) 827-8291

Email: sales@directionalsystems.com

Website: www.directionalsystems.com

Proudly Made in the USA

Directional
Systems