

# PRODUCT ID: 48588

## Outdoor Blank-out LED Direct-view Sign

### MODEL

TCL77DRR-224/120-277VAC



### DIMENSIONS

7" H x 7" W x 5.5" D (est. 3.811 lbs)

### CLASS

CLASS: TCL Series

Control Method: Switch (not included) or external relay.

### CONSTRUCTION

Cabinet: Corrosion resistant, extruded aluminum frame. 5.5" deep, mitered construction.

Face Material: 1/8" impact resistant, smoke-tinted polycarbonate (5109)

Faces: Double Faced Sign

Finish: Duranodic Bronze

Mounting Channel: None

### ELECTRICAL

Flashing: Factory setting 55fpm.

Input Voltage: 120-277 VAC

UL/cUL Listed: Listed for wet locations

### MESSAGE

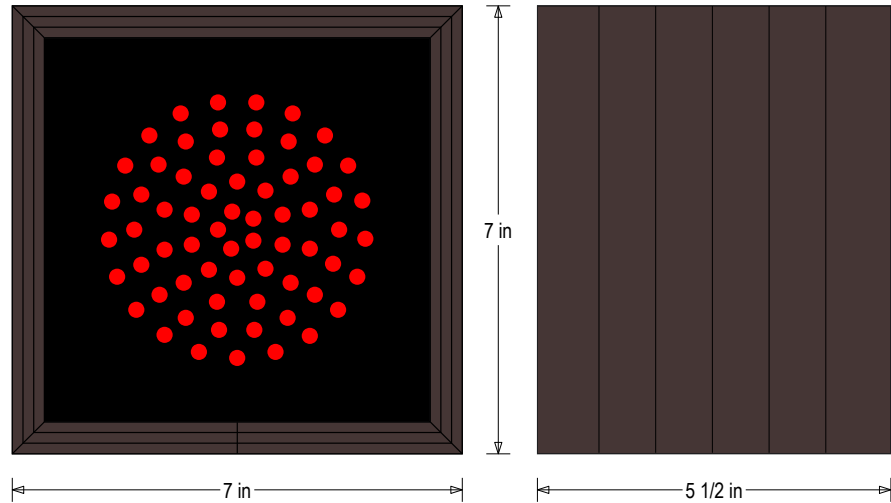
Illumination: Super bright direct view LEDs. Message blanks out when off.

Sign Messages: See message table below

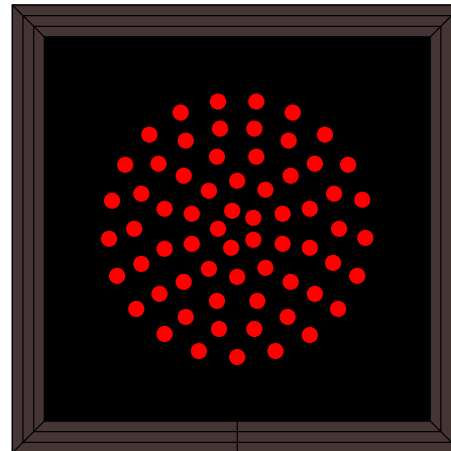
## Product View

NOTE: Sign image may not exactly represent the finished product. For illustration purposes only.

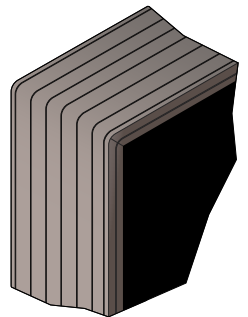
Side A



Side B



Frame Detail



### MESSAGE

### LED/COLOR

### HEIGHT

### AMPS

Red Indicator Dot	Red Wide Angle LED	4.0"	0.033-0.014
Red Indicator Dot (Flashing)	Red Wide Angle LED	4.0"	0.033-0.014
Red Indicator Dot	Red Wide Angle LED	4.0"	0.033-0.014
Red Indicator Dot (Flashing)	Red Wide Angle LED	4.0"	0.033-0.014

NOTE: Above messages are independently controlled.

### Directional Systems

2201 W 50th St.

Erie, PA 16506

Phone: (877) 827-8296

Fax: (877) 827-8291

Email: sales@directionalsystems.com

Website: [www.directionalsystems.com](http://www.directionalsystems.com)

Proudly Made in the USA

