

PRODUCT ID: 47557

Outdoor Blank-out LED Backlit Sign

MODEL

PHX1418RG-L945/120-277VAC



DIMENSIONS

14" H x 18" W x 2.5" D (est. 7.962 lbs)

CLASS

Class: PHX Series

Control Method: Switch (not included) or external relay.

CONSTRUCTION

Back Construction: 0.050" Lift-n-Shift Back

Cabinet: 1-piece, corrosion resistant, extruded aluminum frame, 2.5" deep.

Face Material: 1/8" thick, dark grey diffused acrylic

Faces: Single Faced Sign

Finish: Duranodic Bronze

Graphic: Printed graphic applied to surface

Mounting Channel: None

ELECTRICAL

Flashing: Not Included

Input Voltage: 120-277 VAC

UL/cUL Listed: Listed for wet locations

MESSAGE

Color: Black opaque

Font: Swiss 721 Bold BT

Illumination: Backlit with high intensity LEDs. Message blanks out when off

Sign Messages: See message table below

Product View

NOTE: Sign image may not exactly represent the finished product. For illustration purposes only.



MESSAGE

LED/COLOR

HEIGHT

AMPS

Red Indicator Dot WASH IN USE & Border | Red Wide Angle LED | 5.25", 3.5", 2.0" | 0.267-0.116

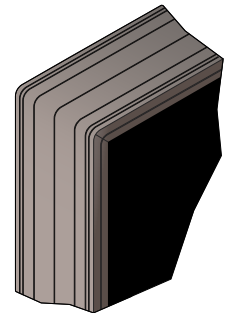
Green Indicator Dot ENTER & Border | Green Wide Angle LED | 5.25", 3.5", 2.0" | 0.413-0.179

NOTE: Above messages are independently controlled.

Sample Display Options



Frame Detail



Directional Systems

2201 W 50th St.

Erie, PA 16509

Phone: (877) 827-8296

Fax: (877) 827-8291

Email: sales@directionalsystems.com

Website: www.directionalsystems.com

Directional
Systems