

# PRODUCT ID: 41941

Indoor LED Backlit Sign

## MODEL

SBLF811W-942R/120-277VAC

## DIMENSIONS

8" H x 11" W x 2.5" D (est. 3.466 lbs)

## CLASS

Class: SBLF Series

Control Method: Switch (not included) or external relay.

## CONSTRUCTION

Back Construction: 0.050" Lift-n-Shift Back

Cabinet: 1-piece, corrosion resistant, extruded aluminum frame, 2.5" deep.

Face Material: 1/8" thick, impact modified acrylic (0000)

Faces: Single Faced Sign

Finish: Duranodic Bronze

Graphic: Printed graphic applied to surface

## ELECTRICAL

Flashing: Not Included

Input Voltage: 120-277 VAC

UL/cUL Listed: Listed

## MESSAGE

Color: Red translucent

Font: Swiss 721 Bold BT

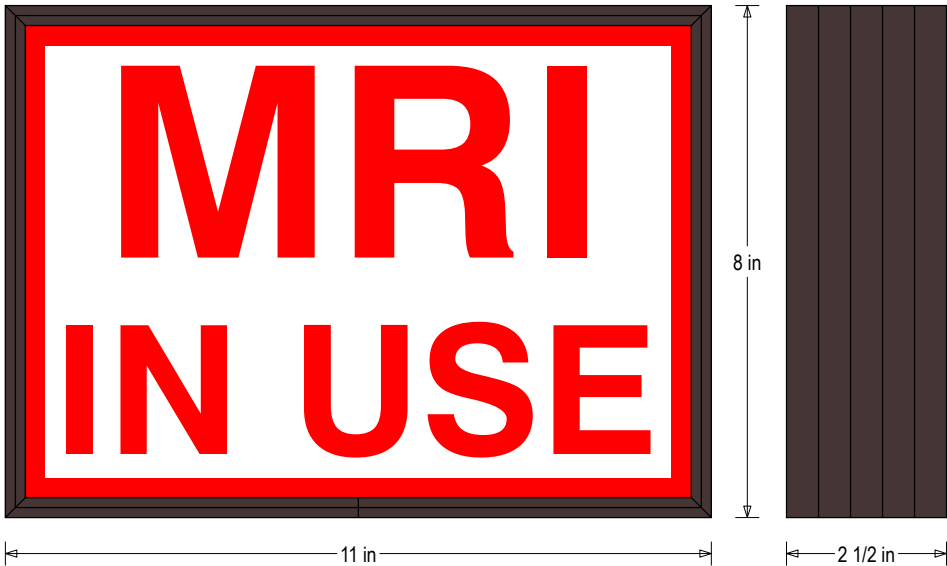
Illumination: Backlit with white LEDs. Message always visible.

Sign Messages: See message table below

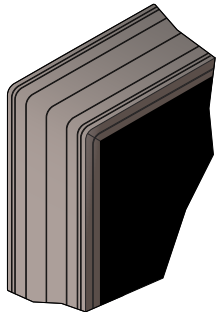


# Product View

NOTE: Sign image may not exactly represent the finished product. For illustration purposes only.



Frame Detail



MESSAGE	LED/COLOR	HEIGHT	AMPS
MRI IN USE	Red Translucent	3.0", 2.125"	0.059-0.026

NOTE: Above messages are independently controlled.

## Directional Systems

2201 W 50th St.

Erie, PA 16509

Phone: (877) 827-8296

Fax: (877) 827-8291

Email: sales@directionalsystems.com

Website: www.directionalsystems.com

**Directional**  
Systems