

PRODUCT ID: 39390

Outdoor Blank-out LED Backlit Sign

MODEL

PHX1418DAA-171/120-277VAC

DIMENSIONS

14" H x 18" W x 5.5" D (est. 18.472 lbs)

CLASS

Class: PHX Series

Control Method: Switch (not included) or external relay.

CONSTRUCTION

Back Construction: 0.050" Lift-n-Shift Back

Cabinet: Corrosion resistant, extruded aluminum frame. 5.5" deep, mitered construction.

Face Material: 1/8" thick, dark grey diffused acrylic

Faces: Double Faced Sign

Finish: Duranodic Bronze

Graphic: Printed graphic applied to surface

Mounting Channel: None

ELECTRICAL

Flashing: Not Included

Input Voltage: 120-277 VAC

UL/cUL Listed: Listed for wet locations

MESSAGE

Color: Black opaque

Font: Swiss 721 Bold BT

Illumination: Backlit with high intensity LEDs. Message blanks out when off

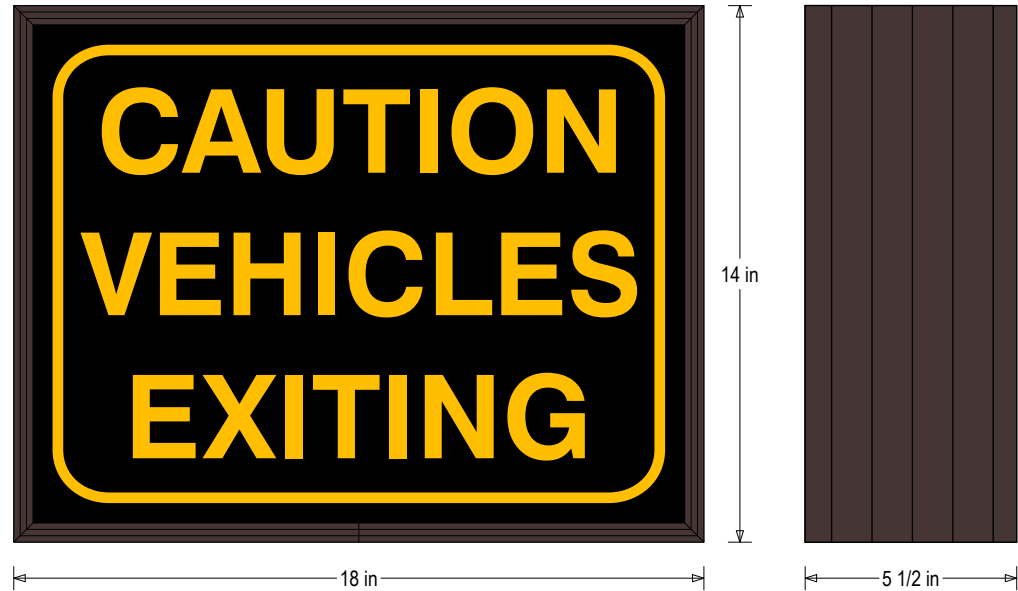
Sign Messages: See message table below



Product View

NOTE: Sign image may not exactly represent the finished product. For illustration purposes only.

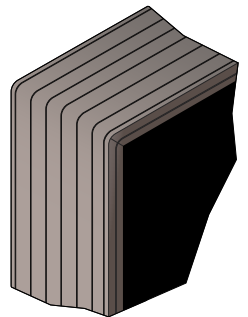
Side A



Side B



Frame Detail



MESSAGE

LED/COLOR

HEIGHT

AMPS

CAUTION VEHICLES EXITING w/Border	Amber Wide Angle LED	2.125", 11.875"	0.368-0.159
CAUTION VEHICLES EXITING w/Border	Amber Wide Angle LED	2.125", 11.875"	0.368-0.159

NOTE: Above messages are independently controlled.

Directional Systems

2201 W 50th St.

Erie, PA 16509

Phone: (877) 827-8296

Fax: (877) 827-8291

Email: sales@directionalsystems.com

Website: www.directionalsystems.com

Directional
Systems