

PRODUCT ID: 36413

Outdoor Blank-out LED Direct-view Sign

MODEL

TCL77G-224/12-24VDC



DIMENSIONS

7" H x 7" W x 2.5" D (est. 2.111 lbs)

CLASS

CLASS: TCL Series

Control Method: Switch (not included) or external relay.

CONSTRUCTION

Back Construction: 0.050" Lift-n-Shift Back

Cabinet: 1-piece, corrosion resistant, extruded aluminum frame, 2.5" deep.

Face Material: 1/8" impact resistant, smoke-tinted polycarbonate (5109)

Faces: Single Faced Sign

Finish: Duranodic Bronze

Mounting Channel: None

ELECTRICAL

Flashing: Factory setting 55fpm.

Input Voltage: 12-24 VDC

Photodimming: None

UL/cUL Listed: Listed for wet locations

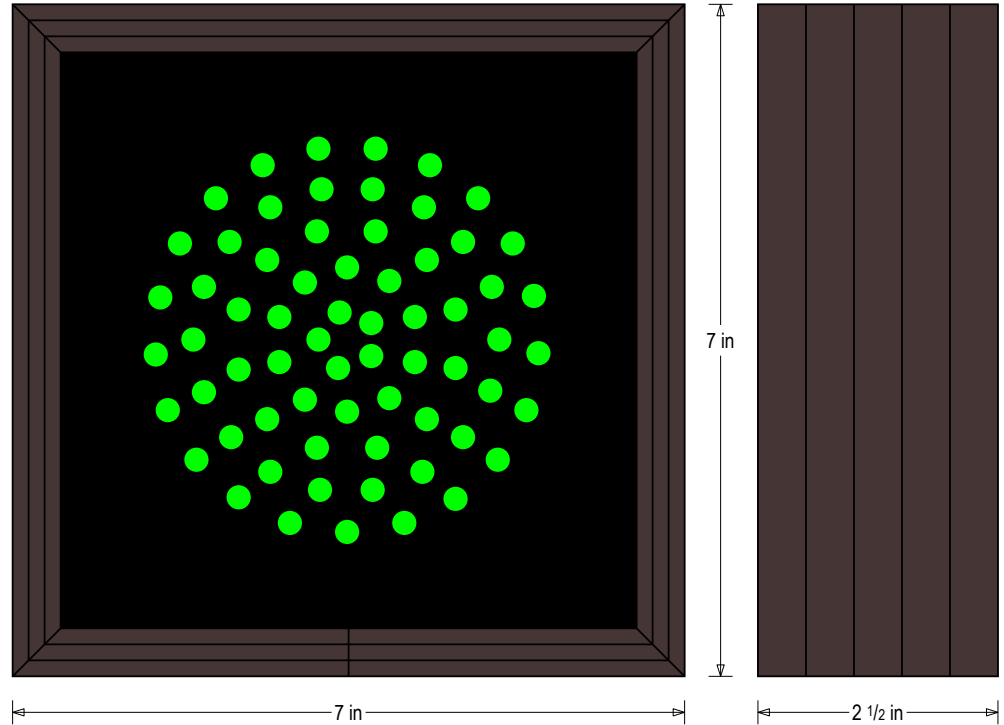
MESSAGE

Illumination: Super bright direct view LEDs. Message blanks out when off.

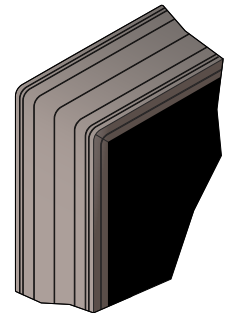
Sign Messages: See message table below

Product View

NOTE: Sign image may not exactly represent the finished product. For illustration purposes only.



Frame Detail



| MESSAGE | LED/COLOR | HEIGHT | AMPS |
|---------|-----------|--------|------|
|---------|-----------|--------|------|

| | | | |
|--------------------------------|----------------------|------|-------------|
| Green Indicator Dot | Green Wide Angle LED | 4.0" | 0.533-0.267 |
| Green Indicator Dot (Flashing) | Green Wide Angle LED | 4.0" | 0.533-0.267 |

NOTE: Above messages are independently controlled.

Directional Systems

2201 W 50th St.

Erie, PA 16509

Phone: (877) 827-8296

Fax: (877) 827-8291

Email: sales@directionalsystems.com

Website: www.directionalsystems.com

