

PRODUCT ID: 34521

Outdoor Blank-out LED Direct-view Sign

MODEL

TCL2818RGRG-I644/120-277VAC



DIMENSIONS

28" H x 18" W x 2.5" D (est. 14.217 lbs)

CLASS

CLASS: TCL Series

Control Method: Switch (not included) or external relay.

CONSTRUCTION

Back Construction: 0.050" Lift-n-Shift Back

Cabinet: 1-piece, corrosion resistant, extruded aluminum frame, 2.5" deep.

Face Material: 1/8" impact resistant, smoke-tinted polycarbonate (5109)

Faces: Single Faced Sign

Finish: Duranodic Bronze

Mounting Channel: None

ELECTRICAL

Flashing: Not Included

Input Voltage: 120-277 VAC

Photodimming: None

UL/cUL Listed: Listed for wet locations

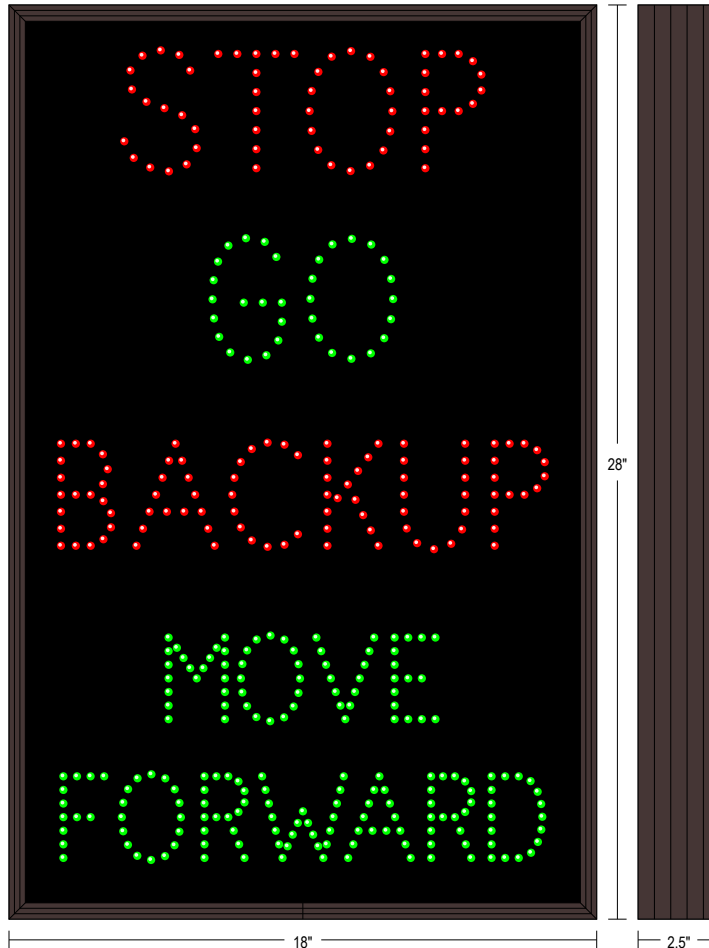
MESSAGE

Illumination: Super bright direct view LEDs. Message blanks out when off.

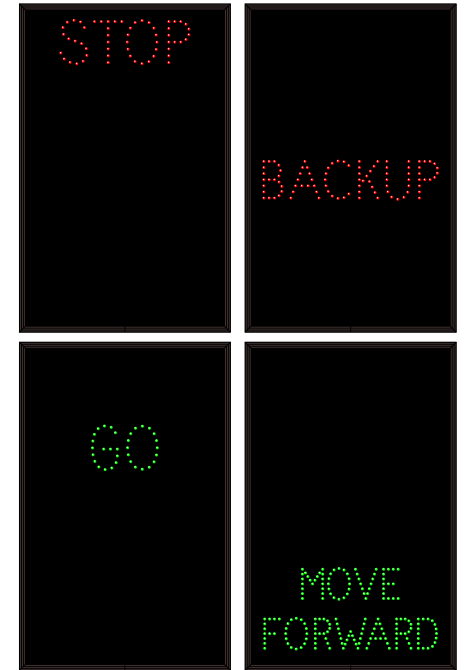
Sign Messages: See message table below

Product View

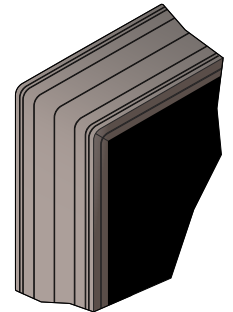
NOTE: Sign image may not exactly represent the finished product. For illustration purposes only.



Sample Display Options



Frame Detail



MESSAGE	LED/COLOR	HEIGHT	AMPS
STOP	Red Wide Angle LED	3.5"	0.029-0.013
GO	Green Wide Angle LED	3.5"	0.027-0.012
BACKUP	Red Wide Angle LED	3.125"	0.045-0.020
MOVE FORWARD	Green Wide Angle LED	2.5"	0.147-0.064

NOTE: Above messages are independently controlled.

Directional Systems

2201 W 50th St.

Erie, PA 16509

Phone: (877) 827-8296

Fax: (877) 827-8291

Email: sales@directionalsystems.com

Website: www.directionalsystems.com

