

## PRODUCT ID: 33803

### Outdoor Blank-out LED Direct-view Sign

#### MODEL

TCL3414GG-1429/120-277VAC



#### DIMENSIONS

34" H x 14" W x 2.5" D (est. 11.217 lbs)

#### CLASS

CLASS: TCL Series

Control Method: Switch (not included) or external relay.

#### CONSTRUCTION

Cabinet: 1-piece, corrosion resistant, extruded aluminum frame, 2.5" deep.

Face Material: 1/8" impact resistant, smoke-tinted polycarbonate (5109)

Faces: Single Faced Sign

Finish: Duranodic Bronze

Mounting Channel: None

#### ELECTRICAL

Flashing: Not Included

Input Voltage: 120-277 VAC

UL/cUL Listed: Listed for wet locations

#### MESSAGE

Illumination: Super bright direct view LEDs. Message blanks out when off.

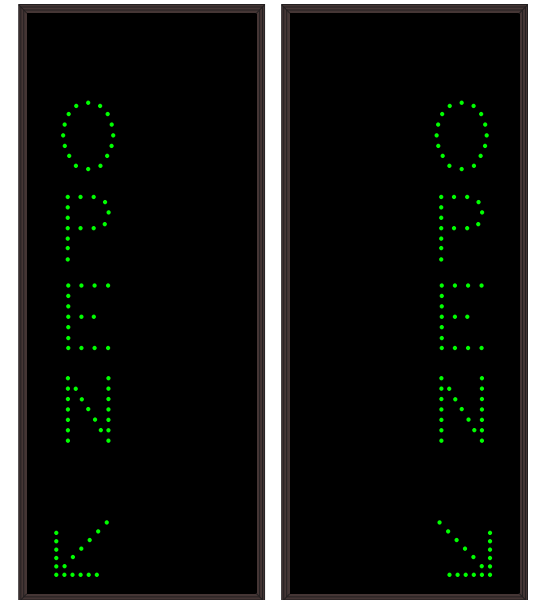
Sign Messages: See message table below

## Product View

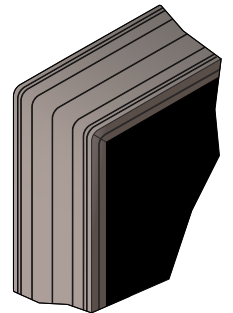
NOTE: Sign image may not exactly represent the finished product. For illustration purposes only.



### Sample Display Options



### Frame Detail



#### MESSAGE

#### LED/COLOR

#### HEIGHT

#### AMPS

OPEN w/Down Left Arrow	Green Wide Angle LED	3.5"	0.131-0.057
OPEN w/Down Right Arrow	Green Wide Angle LED	3.5"	0.131-0.057

NOTE: Above messages are independently controlled.

#### Directional Systems

2201 W 50th St.

Erie, PA 16506

Phone: (877) 827-8296

Fax: (877) 827-8291

Email: [sales@directionalsystems.com](mailto:sales@directionalsystems.com)

Website: [www.directionalsystems.com](http://www.directionalsystems.com)

**Directional**  
Systems