

PRODUCT ID: 38775

Indoor Blank-out LED Backlit Sign

MODEL

SBL77R-E840/120-277VAC



DIMENSIONS

7" H x 7" W x 2.5" D (est. 1.935 lbs)

CLASS

Class: SBL Series

Control Method: Switch (not included) or external relay.

CONSTRUCTION

Back Construction: 0.050" Lift-n-Shift Back

Cabinet: 1-piece, corrosion resistant, extruded aluminum frame, 2.5" deep.

Face Material: 1/8" thick, dark grey diffused acrylic

Faces: Single Faced Sign

Finish: Duranodic Bronze

Graphic: Printed graphic applied to surface

ELECTRICAL

Flashing: Not Included

Input Voltage: 120-277 VAC

UL/cUL Listed: Listed

MESSAGE

Color: Black opaque

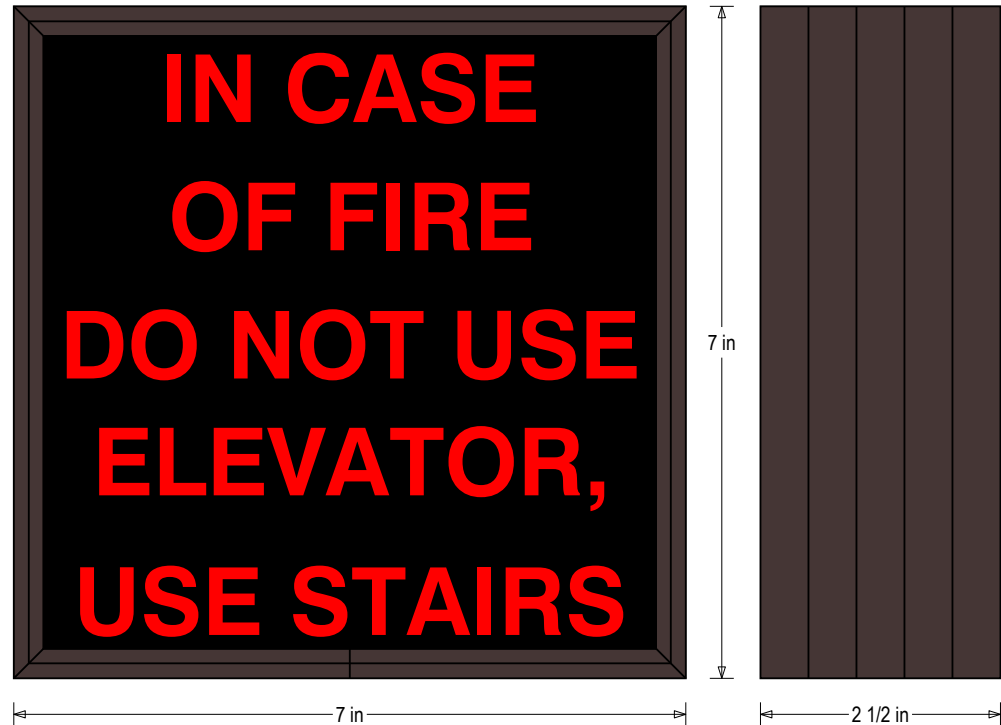
Font: Swiss 721 Bold BT

Illumination: Backlit with LEDs. Message blanks out when off.

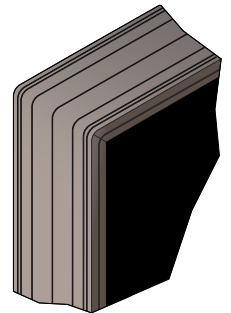
Sign Messages: See message table below

Product View

NOTE: Sign image may not exactly represent the finished product. For illustration purposes only.



Frame Detail



MESSAGE

IN CASE OF FIRE, DO NOT USE ELEVATOR, USE STAIRS

LED/COLOR

Red Wide Angle LED

HEIGHT

.75"

AMPS

0.026-0.011

NOTE: Above messages are independently controlled.

Directional Systems

2201 W 50th St.

Erie, PA 16509

Phone: (877) 827-8296

Fax: (877) 827-8291

Email: sales@directionalsystems.com

Website: www.directionalsystems.com

Directional
Systems