

## PRODUCT ID: 13712

### Outdoor Blank-out LED Direct-view Sign

#### MODEL

TCL1418GG-D170/120-277VAC



#### DIMENSIONS

14" H x 18" W x 2.5" D (est. 8.165 lbs)

#### CLASS

CLASS: TCL Series

Control Method: Switch (not included) or external relay.

#### CONSTRUCTION

Back Construction: 0.050" Lift-n-Shift Back

Cabinet: 1-piece, corrosion resistant, extruded aluminum frame, 2.5" deep.

Face Material: 1/8" impact resistant, smoke-tinted acrylic (5109)

Faces: Single Faced Sign

Finish: Duranodic Bronze

Mounting Channel: None

#### ELECTRICAL

Flashing: Not Included

Input Voltage: 120-277 VAC

Photodimming: None

UL/cUL Listed: Listed for wet locations

#### MESSAGE

Illumination: Super bright direct view LEDs. Message blanks out when off.

Sign Messages: See message table below

## Product View

NOTE: Sign image may not exactly represent the finished product. For illustration purposes only.



#### MESSAGE

#### LED/COLOR

#### HEIGHT

#### AMPS

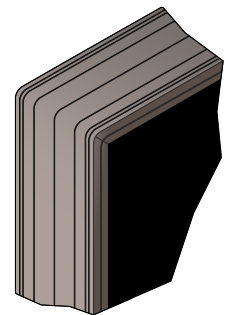
ATM	Green Wide Angle LED	3.25"	0.039-0.017
LANE 3	Green Wide Angle LED	3.25"	0.060-0.026

NOTE: Above messages are independently controlled.

### Sample Display Options



#### Frame Detail



#### Directional Systems

2201 W 50th St.

Erie, PA 16509

Phone: (877) 827-8296

Fax: (877) 827-8291

Email: sales@directionalsystems.com

Website: www.directionalsystems.com

**Directional**  
Systems