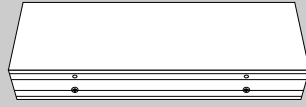
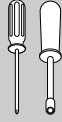


TCL LED SERIES

Replacement Power Supply Installation Instructions

What You Need:

Philips Head Screw Driver
1/4" Nut Driver
Replacement Power Supply

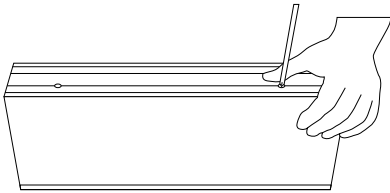


Always turn off the power to the sign prior to opening the cabinet. Disconnect the power wires going to the sign.

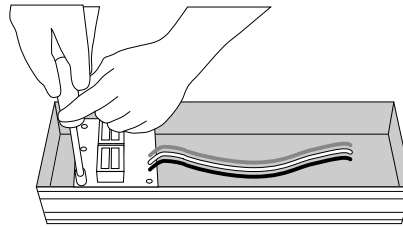
Power Supply Removal Steps

1. Using the Philips head screw driver, remove the two screws on the bottom of the cabinet.

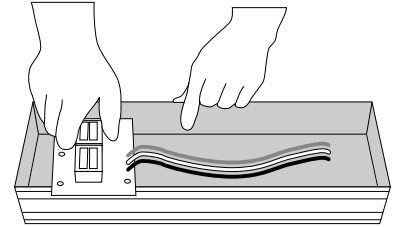
With the screws removed the back will lift off the cabinet.



2. Next, remove the 10 nuts that hold the power supply to the circuit board. There are two nuts per stand post. These double nuts are meant to lock the power supply to the board.



3. Carefully lift the old power supply off the standoffs and out of the cabinet.



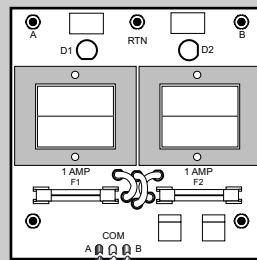
Power Supply Identification

There are three different styles of power supplies. Depending on the number of messages there may be two or more of the pictured supplies. It is important that you replace the proper supplies.



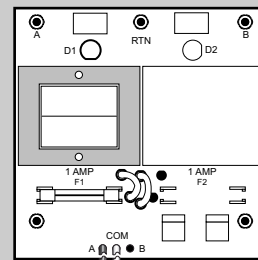
Before proceeding, verify that the new power supply matches the old power supply exactly.

A and B Side Dual Transformer Power Supply



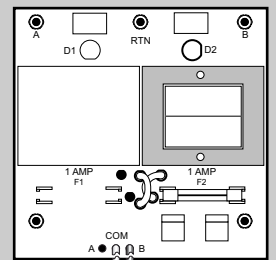
Message A Primary Black
Common White
Message B Primary Red

A-Side Single Transformer Power Supply



Message A Primary Black
Common White

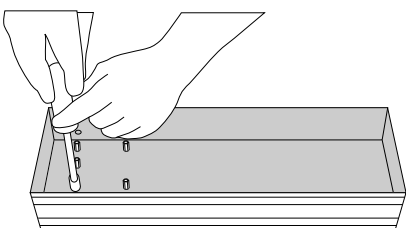
B-Side Single Transformer Power Supply



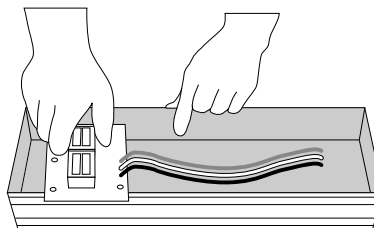
Common White
Message B Primary Red

Power Supply Replacement Steps

4. Using a 1/4" nut driver, hand tighten the standoffs on the circuit board. Take care not to over tighten as this could crack the circuit board.



5. Next, place the new power supply on the five standoffs and hand tighten one nut on each of the standoff posts.



6. Place the second nut on each standoff to lock them in place. Take care to not over tighten. Finally, place the back on the cabinet and replace the two philips head screws.

