

# PHX Backlit Series

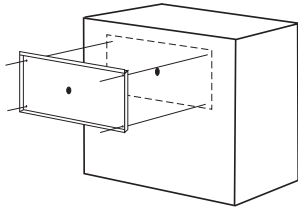
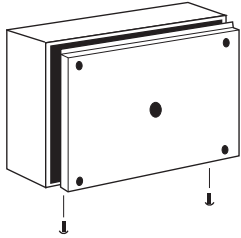
## Installation Instructions

PHX 03212011 KAM

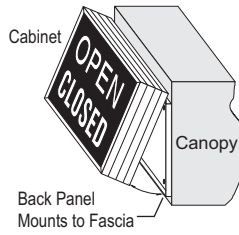
### Wall Mount

#### Standard Install Instructions

- Remove the back panel of the unit by unscrewing the two retaining screws on the bottom of the unit.



- Mount the back panel to the appropriate building face with four fasteners. (Not Supplied)



- Lift the cabinet on the top edge of the back panel and shift forward, make wire connections according to the instructions below, then replace the two retaining screws removed in step one.



**Note:** Do not overtighten fasteners or distort back panel.

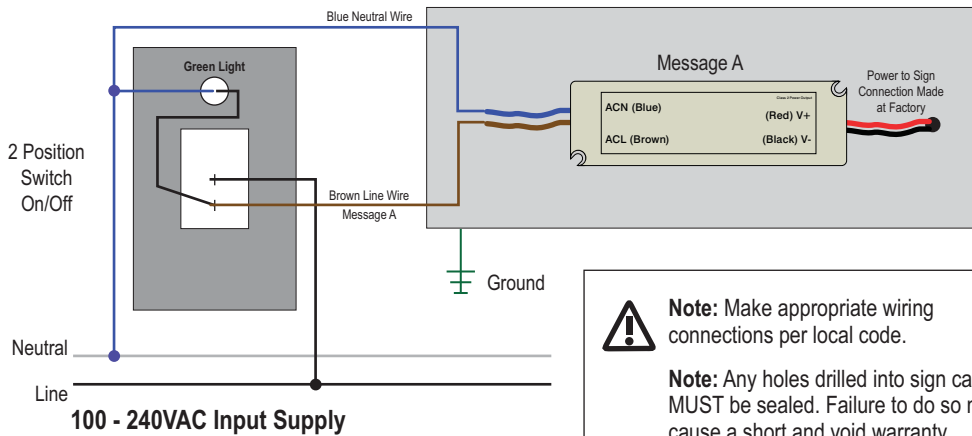
**Note:** Clear any metal chips from inside sign cabinet, failure to do so may void warranty.

**Note:** This sign is intended to be installed in accordance with the requirements of Article 600 of the National Electric Code and/or other applicable local codes. This includes proper grounding and bonding of the sign.

### PHX Standard Single Message

#### Power Supply Wiring Diagram

- Connect Brown Message A wire top switch pole.
- Connect Blue Neutral wire to supply circuit.



**Note:** Make appropriate wiring connections per local code.

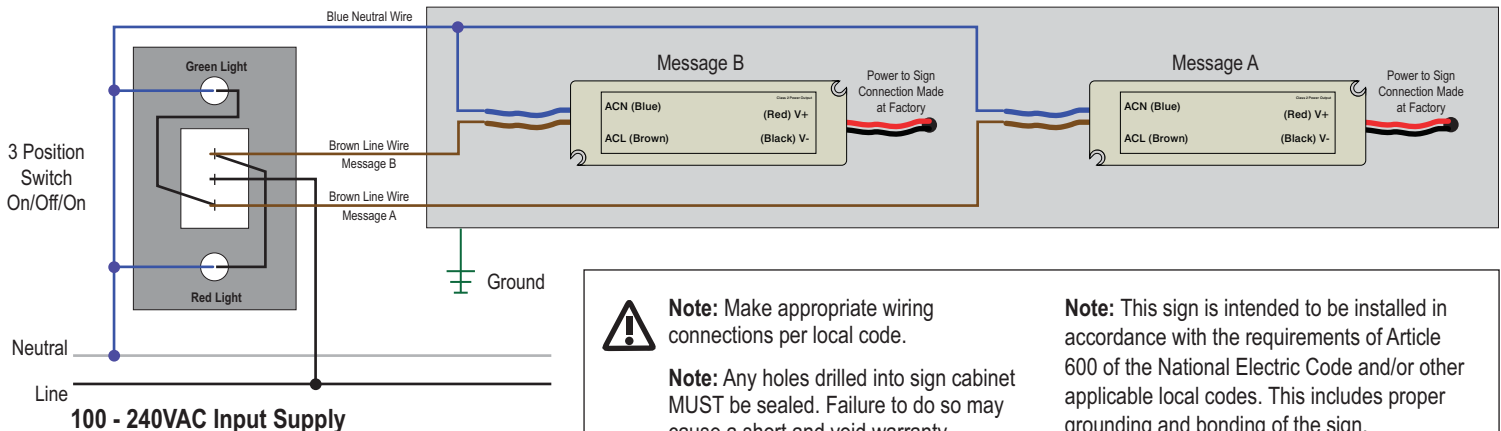
**Note:** Any holes drilled into sign cabinet MUST be sealed. Failure to do so may cause a short and void warranty.

**Note:** This sign is intended to be installed in accordance with the requirements of Article 600 of the National Electric Code and/or other applicable local codes. This includes proper grounding and bonding of the sign.

### PHX Standard Dual Message

#### Power Supply Wiring Diagram

- Connect Brown Message B wire to top switch pole.
- Connect Brown Message A wire to bottom switch pole.
- Connect both Blue Neutral wires to supply circuit.



**Note:** Make appropriate wiring connections per local code.

**Note:** Any holes drilled into sign cabinet MUST be sealed. Failure to do so may cause a short and void warranty.

**Note:** This sign is intended to be installed in accordance with the requirements of Article 600 of the National Electric Code and/or other applicable local codes. This includes proper grounding and bonding of the sign.