

## PRODUCT ID: 43306

### Outdoor Blank-out LED Direct-view Sign

#### MODEL

TCL1418DAA-I971/120-277VAC

#### DIMENSIONS

14" H x 18" W x 5.5" D (est. 10.994 lbs)

#### CLASS

CLASS: TCL Series

Control Method: Switch (not included) or external relay.

#### CONSTRUCTION

Back Construction:

Cabinet: Corrosion resistant, extruded aluminum frame. 5.5" deep, mitered construction.

Face Material: 1/8" impact resistant, smoke-tinted polycarbonate (5109)

Faces: Double Faced Sign

Finish: Duranodic Bronze

Mounting Channel: None

#### ELECTRICAL

Flashing: Not Included

Input Voltage: 120-277 VAC

Photodimming: None

UL/cUL Listed: Listed for wet locations

#### MESSAGE

Illumination: Super bright direct view LEDs. Message blanks out when off.

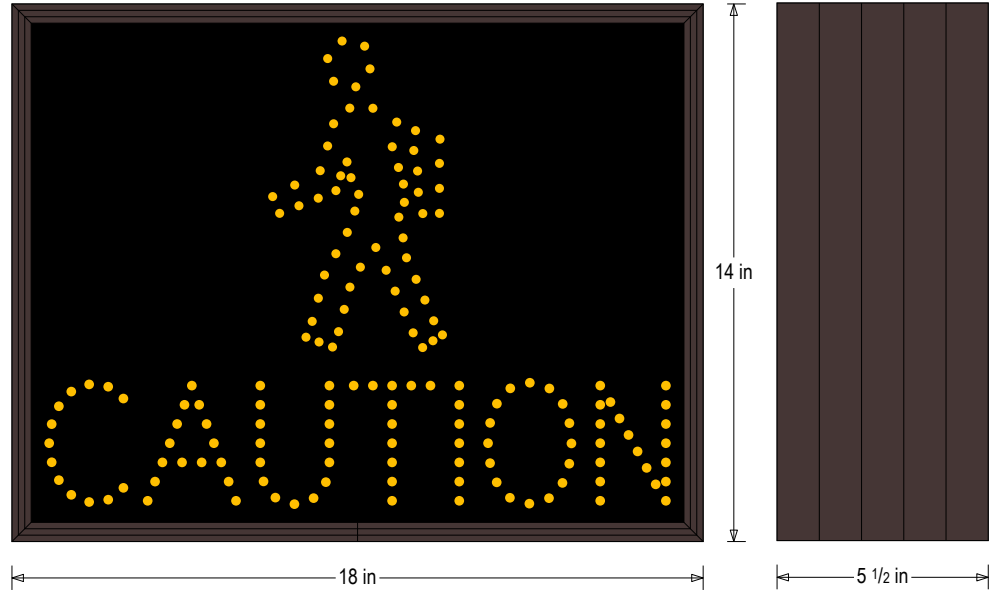
Sign Messages: See message table below



## Product View

NOTE: Sign image may not exactly represent the finished product. For illustration purposes only.

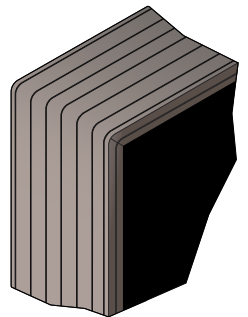
Side A



Side B



Frame Detail



| MESSAGE | LED/COLOR | HEIGHT | AMPS |
|---------|-----------|--------|------|
|---------|-----------|--------|------|

|                             |                      |        |             |
|-----------------------------|----------------------|--------|-------------|
| Pedestrian Symbol w/CAUTION | Amber Wide Angle LED | 12.25" | 0.077-0.034 |
| Pedestrian Symbol w/CAUTION | Amber Wide Angle LED | 12.25" | 0.077-0.034 |

NOTE: Above messages are independently controlled.

#### Directional Systems

2201 W 50th St.

Erie, PA 16509

Phone: (877) 827-8296

Fax: (877) 827-8291

Email: [sales@directionalsystems.com](mailto:sales@directionalsystems.com)

Website: [www.directionalsystems.com](http://www.directionalsystems.com)

**Directional**  
Systems