

PRODUCT ID: 39080
Indoor LED Backlit Sign

MODEL
SBLF811W-945R/120-277VAC



DIMENSIONS
8" H x 11" W x 2.5" D (est. 3.465 lbs)

CLASS
Class: SBLF Series
Control Method: Switch (not included) or external relay.

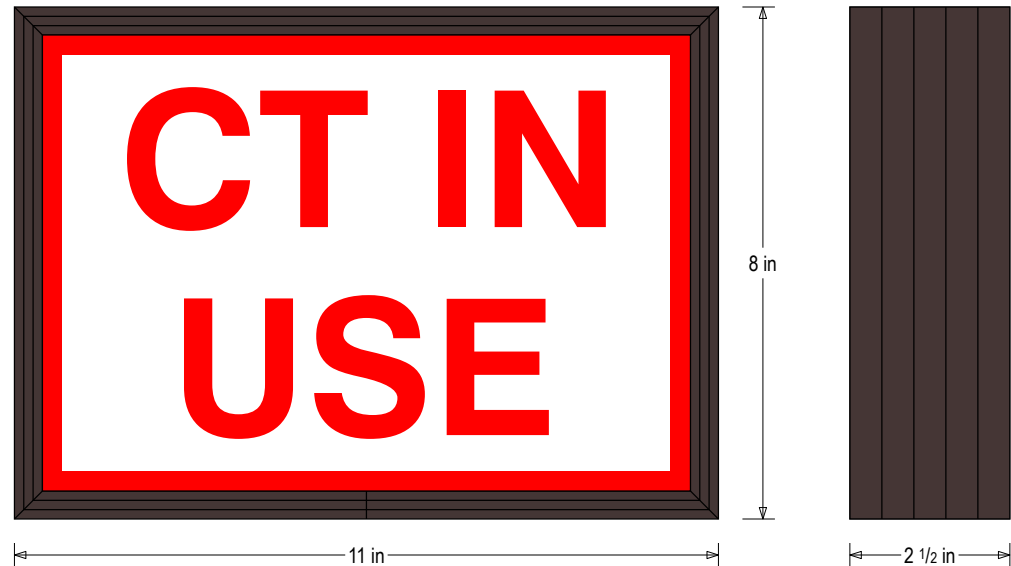
CONSTRUCTION
Back Construction: 0.050" Lift-n-Shift Back
Cabinet: 1-piece, corrosion resistant, extruded aluminum frame, 2.5" deep.
Face Material: 1/8" thick, impact modified acrylic (0000)
Faces: Single Faced Sign
Finish: Duranodic Bronze
Graphic: Printed graphic applied to surface

ELECTRICAL
Flashing: Not Included
Input Voltage: 120-277 VAC
UL/cUL Listed: Listed

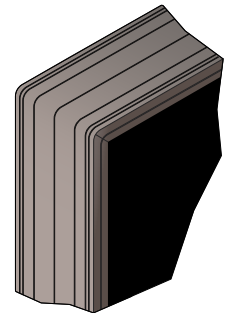
MESSAGE
Color: Red translucent
Font: Swiss 721 Bold BT
Illumination: Backlit with white LEDs. Message always visible.
Sign Messages: See message table below

Product View

NOTE: Sign image may not exactly represent the finished product. For illustration purposes only.



Frame Detail



MESSAGE	LED/COLOR	HEIGHT	AMPS
CT IN USE	Red Translucent, White Wide Angle LED	2.125"	0.059-0.026

NOTE: Above messages are independently controlled.

Directional Systems
2201 W 50th St.
Erie, PA 16509
Phone: (877) 827-8296
Fax: (877) 827-8291
Email: sales@directionalsystems.com
Website: www.directionalsystems.com

