

## PRODUCT ID: 38878

Indoor LED Backlit Sign

### MODEL

SBLF1212W-A174B/120-277VAC



### DIMENSIONS

12" H x 12" W x 2.5" D (est. 3.004 lbs)

### CLASS

Class: SBLF Series

Control Method: Switch (not included) or external relay.

### CONSTRUCTION

Back Construction: 0.050" Lift-n-Shift Back

Cabinet: 1-piece, corrosion resistant, extruded aluminum frame, 2.5" deep.

Face Material: 1/8" thick, impact modified acrylic (0000)

Faces: Single Faced Sign

Finish: Duranodic Bronze

Graphic: Printed graphic applied to surface

### ELECTRICAL

Flashing: Not Included

Input Voltage: 120-277 VAC

UL/cUL Listed: Listed

### MESSAGE

Color: Blue translucent

Font: Swiss 721 Bold BT

Illumination: Backlit with white LEDs. Message always visible.

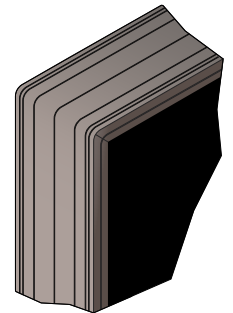
Sign Messages: See message table below

## Product View

NOTE: Sign image may not exactly represent the finished product. For illustration purposes only.



Frame Detail



MESSAGE	LED/COLOR	HEIGHT	AMPS
AREA OF RESCUE ASSISTANCE	Blue Translucent	3.75", 1.5"	0.098-0.042

NOTE: Above messages are independently controlled.

### Directional Systems

2201 W 50th St.

Erie, PA 16509

Phone: (877) 827-8296

Fax: (877) 827-8291

Email: sales@directionalsystems.com

Website: www.directionalsystems.com

**Directional**  
Systems