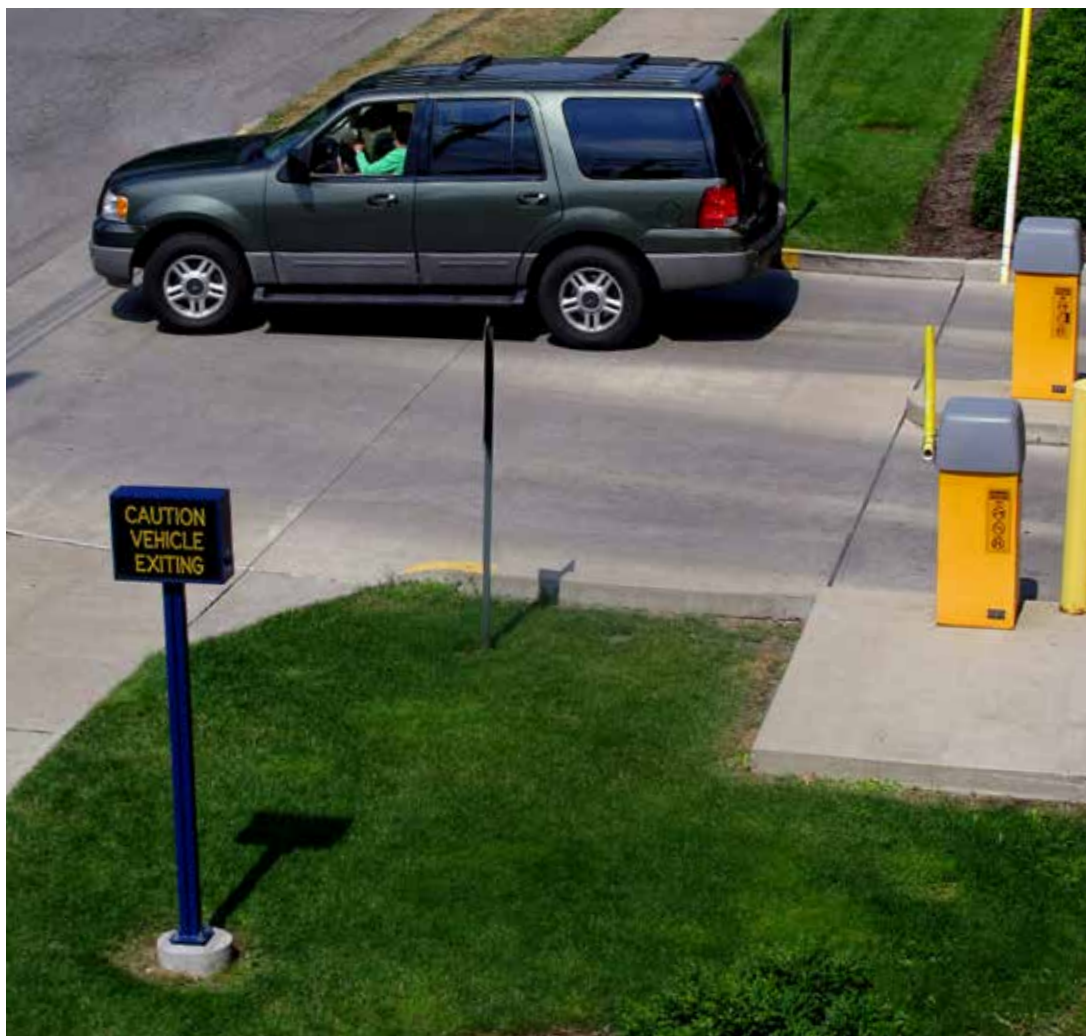




The simple,
Vehicle Detection
System!



Vehicle Detection System ***Control Module***

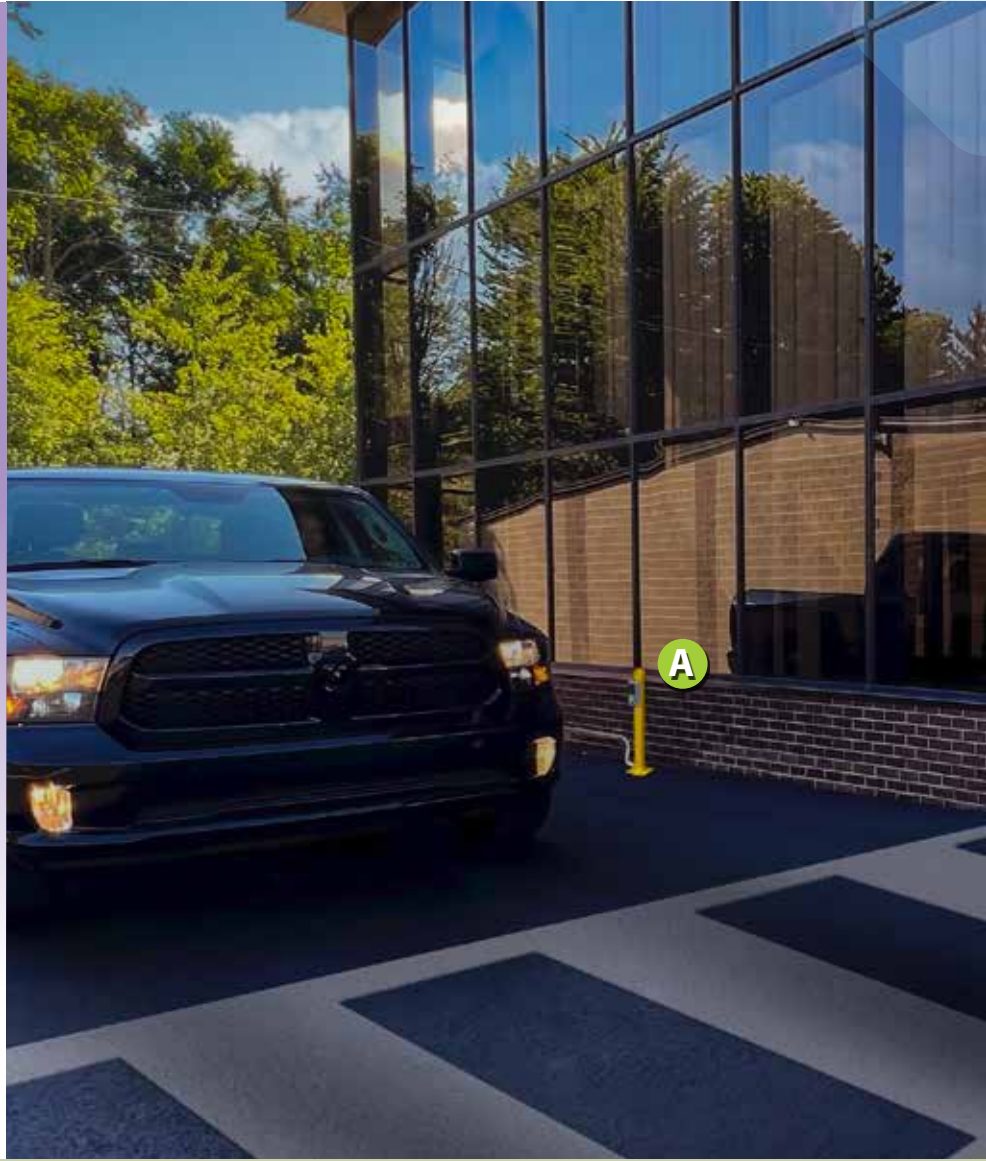
What is the Vehicle Detection System?

The Vehicle Detection System is a simple solution that promotes pedestrian safety and deters vehicle-pedestrian accidents by activating a sign to alert pedestrians of an approaching vehicle. It is made of up to five unique components:

System Components

A Sensor

Our specially designed Sensor detects only vehicles and ignores pedestrians and other types of light traffic. This Sensor triggers all other components of the Vehicle Detection System.
(Post sold separately)



B Control Module

The Control Module allows the Vehicle Detection System's sign and audio accessories to be activated for a time span specified by the user.

Finish your System

In addition to the system's two primary components (**A - Sensor** and **B - Control Module**), the system is made complete with the addition of three optional pieces: **C - Signage**, **D - Auxiliary Visual Alerts**, and **E - Audio Accessories**.

Installing these add-on components will maximize the system's ability to protect both pedestrians and motorists.

C Signage

A low-voltage (12-24 VDC) or line voltage (100-240 VAC) direct-view LED sign is used to visually alert pedestrians of vehicles approaching a corner or other blind spot.



How does the Vehicle Detection System Work?



Create a kit that includes everything you need from one source!

When a vehicle passes our specially designed sensor's beam, it sends an electronic relay to the Vehicle Detection System's Control Module. When the Control Module receives the sensor's electronic signal, it activates all the components of the Vehicle Detection System for a timespan of 1-99 seconds as programmed by the user.

While illuminated, the direct-view LED sign — which is readable in direct sunlight — alerts pedestrians of the danger of approaching traffic outside of their line of sight. The sign should be installed in a location that gives pedestrians adequate time to see the illuminated sign, read its warning message, stop, see the approaching vehicle, and avoid a devastating collision.

In addition to illuminated signage, the Vehicle Detection System can be equipped with auxiliary visual alerts, such as beacon strobes or flashing lights, that are activated and kept illuminated by the Control Module. These added visual cues help garner more attention than just the sign by itself.

Finally, Audio Accessories can be added to the Vehicle Detection System to bolster its ability to warn pedestrians of approaching vehicles. Audio accessories are also activated and kept audible by the Control Module and maximize the system's ability to capture pedestrians' attention.

Signal-Tech's Vehicle Detection System is a smart, proactive way to protect pedestrians while safeguarding your organization from liability.

D Auxiliary Visual Alerts

Additional visual alerts, such as strobes and flashers, can be added to the Vehicle Detection System to enhance its ability to alert pedestrians of an approaching vehicle.



E Audio Accessories

Audio accessories help to further alert pedestrians of approaching vehicles. They can be adjusted as loud as 95dB at 10 feet and can be anything from a buzzer or chirp to a spoken-word warning message.



We do **MORE** than you think...

System Specifications

General Specifications

- Total power consumption: 15W plus LED sign consumption

Sensor

- Optex OVS-01GT Ultrasonic / Microwave Sensor
- 12–24VDC input (supplied by Control Module)
- Adjustable microwave range: 6' to 18'
- Adjustable ultrasonic range: 2' to 3'-4"
- Max detectable vehicle speed: 12.5 MPH
- IP65 enclosure
- Wide temperature range: -22°F to 122°F (95% RH, non-condensing)
- Applicable wire Solid: AWG 30–16, Stranded AWG 22–14

Control Module

- Operating voltage: 24VDC or 100-240VAC (depending on model #)
- Adjustable activation timer: 1-99 seconds
- NEMA 4X enclosure
- Relay output rating: 1A (AC); 4A (DC)

Signage & Accessories

- Operating voltage: 24VDC or 100-240VAC (depending on model #)
- Power consumption: Varies (refer to sign's spec sheet)
- Flashing: Optional
- Audible alarm: Optional
- Strobe: Optional

Create a kit that includes everything you need from one source!

**Directional
Systems**

2201 West 50th Street • Erie, Pennsylvania 16509
Toll Free: **877-827-8296** • Fax: **877-827-8291**

directionalsystems.com

Copyright © 2022 Directional Systems